

Feature.0021

## **Data Array Import with Saved Settings**

How VirtualLab can import multiple DataArrays in an efficient way with the saved settings

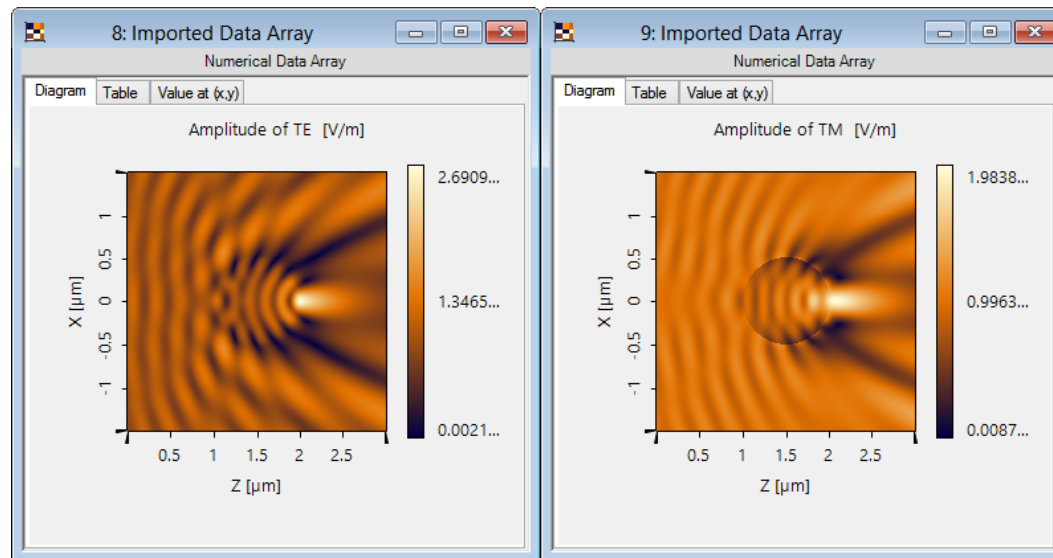
# About This Use Case

---

- The following toolbox is required
  - Starter toolbox
- This use case is produced with VirtualLab Fusion (Build 7.0.0.35).
- Get your free Trial Version [here!](#)

# This Use Case Shows ...

- how to save the Import Settings for Data Array import?
- how to load the Import Settings for Data Array import?



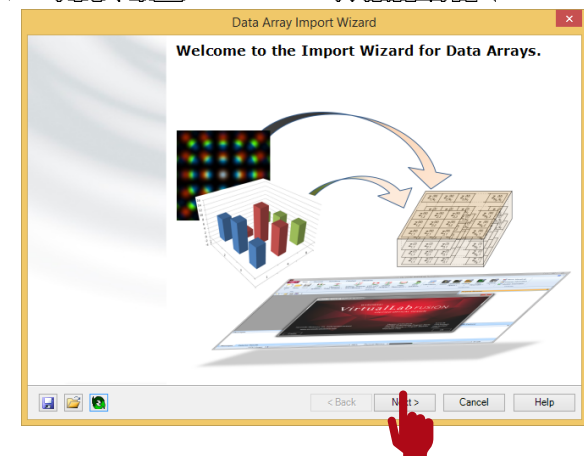
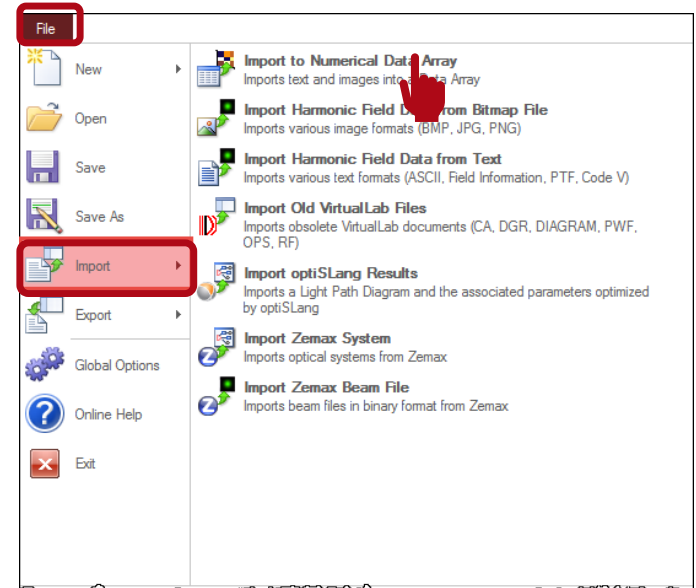
# Overview

---

- Data is often stored in the form of .txt, .csv, .bmp etc.
- VirtualLab supports to import these data forms in Data Array.
- It is often the case that the author needs to import multiple Data Arrays which have similar settings, e.g. the sampling distance, the label of axis, the units, etc.
- VirtualLab supports to save the settings and load the settings for multiple Data Arrays.

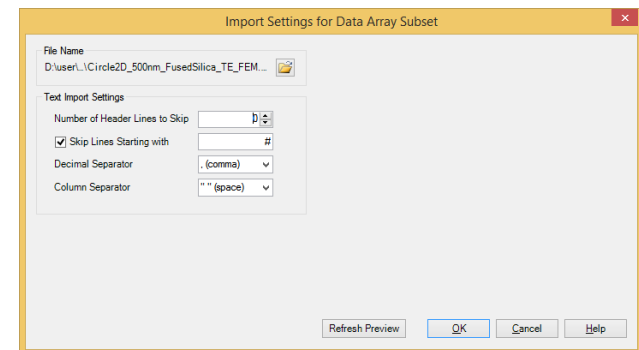
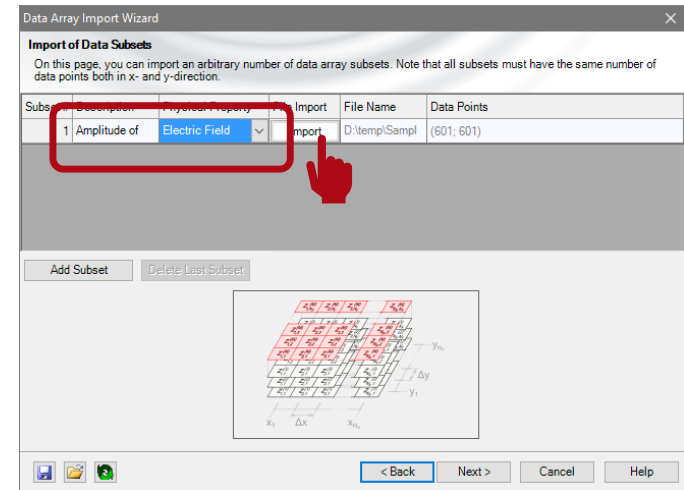
# Initialize Data Array Import Wizard

- Click *File*, click *Import* to choose *Import to Numerical Data Array*.
- Then the Data Array Import Wizard is shown.
- Click *Next*.



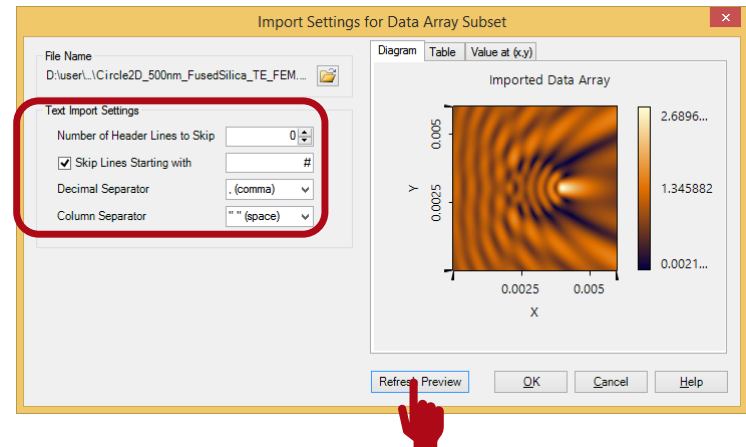
# Import Data Array

- We come to *Import of Data Subsets*.
- Fill the Description, e.g. Amplitude of TE.
- Choose Physical Property, e.g. Electric field.
- Click *Import* and choose the data file to import.
- After choosing the data file, then the Import Settings is shown.



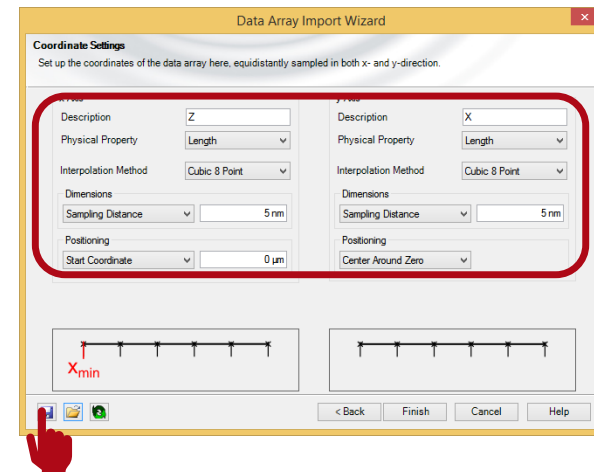
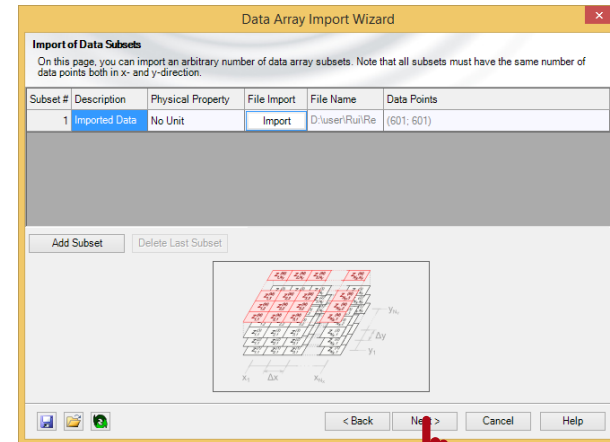
# Import Data Array

- Set the Text Import Settings according to the original data file, e.g. as shown in the figure.
- Click *Refresh Preview* to see the preview.
- Click OK to finish this part.



# Save Import Settings

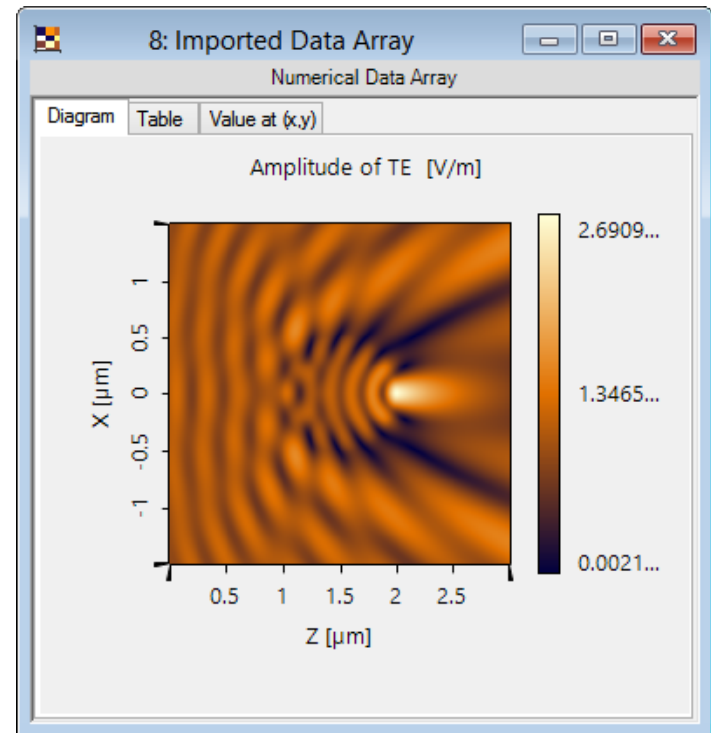
- Click *Next* to go to the Coordinate Settings.
- Set all the Coordinate parameters according to the original file, e.g. as shown in the figure.
- Click *Save Import Settings* to save the *dalImport* file.
- Click Finish.





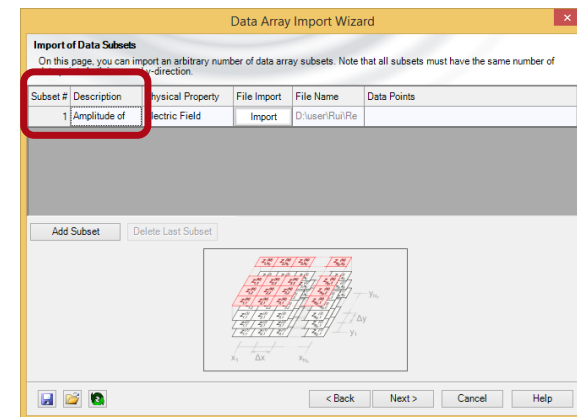
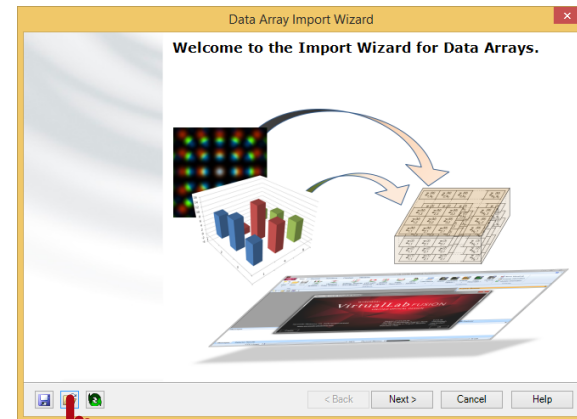
# Import Imported Data Array

- The imported data is shown.



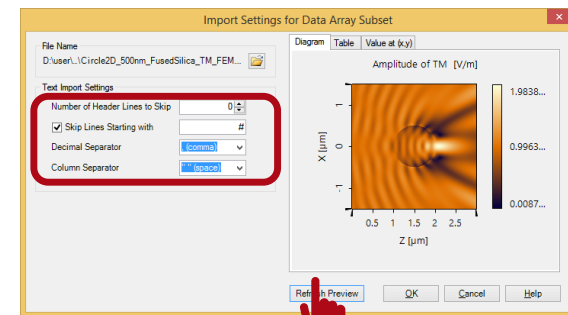
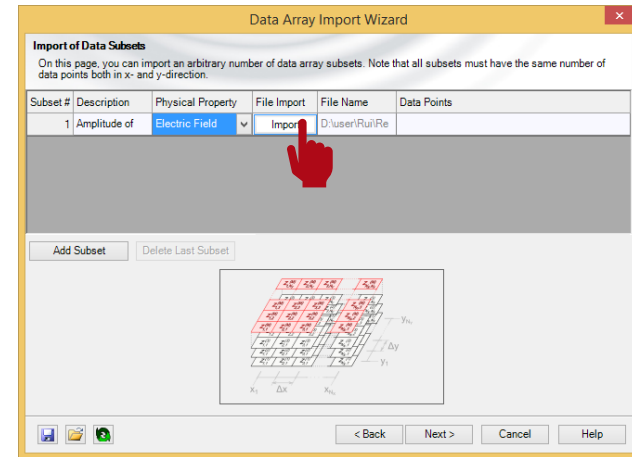
# Import Data Array with Saved Setting

- Click *Load Import Settings* and load the saved *.daImport* file
- Click next to go to Import of Data Subsets.
- Change the Description if necessary, e.g. Amplitude of TM.



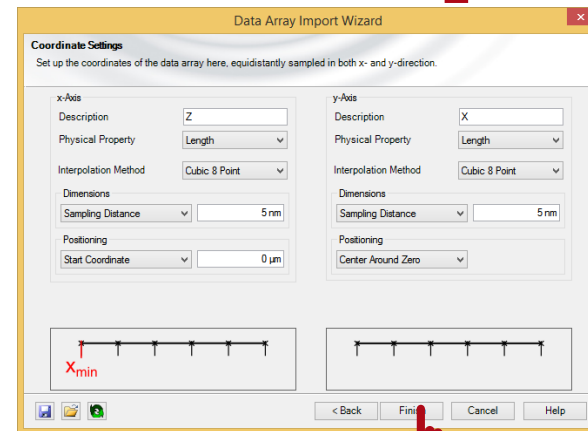
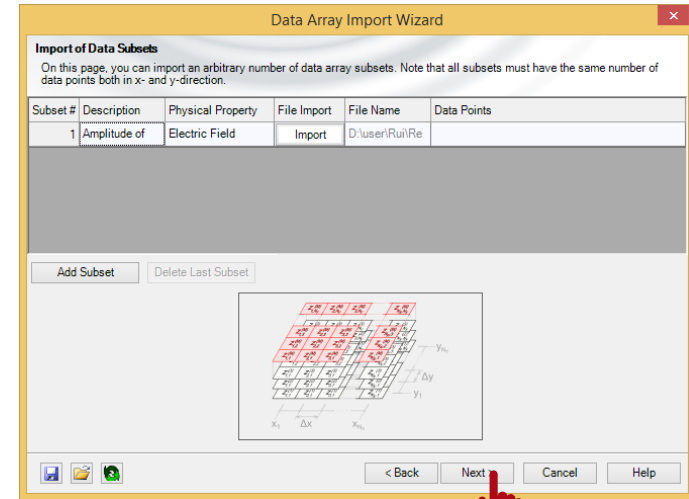
# Import Data Array with Saved Setting

- Click *Import* and choose another data file to import.
- After choosing the data file, then the Import Settings is shown.
- The saved settings are already there.
- Click *Refresh Preview* to see the preview.
- Click OK to finish this part.



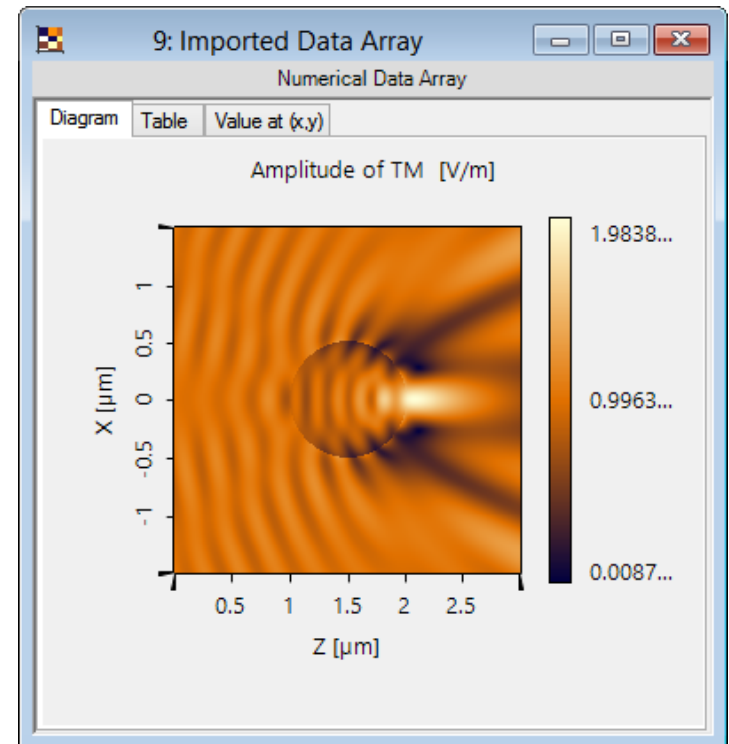
# Import Data Array with Saved Setting

- Click next to go to Coordinate Settings.
- The parameters are already there as saved.
- Click Finish.



# View Imported Data Array

- The imported data is shown.



# Document & Technical Info

---

code	Feature.0021
version of document	1.0
title	DataArray Import with Saved Settings
category	Tools & Handling
author	Rui Shi (LightTrans)
used VL version	7.0.0.35
last modified date	August 28, 2017