

Feature.0005

Export Systems and Components into STL / IGES Format

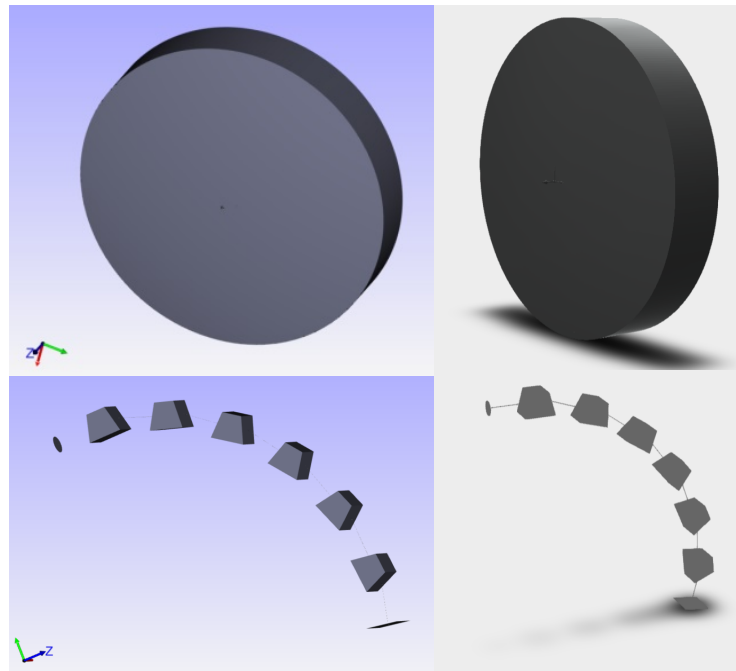
How to export system (like lens system, prism system and mirror system) and components (like lens, prism and mirror) from VirtualLab Fusion into STL and IGES format?

About This Use Case

- The following toolbox is required
 - Starter toolbox
- This use case was produced using VirtualLab Fusion (Build 7.0.0.35).
- Get your free Trial Version [here!](#)

This Use Case Shows...

- how to export components, e.g. a spherical lens, to STL and IGES files?
- how to export systems, e.g. a chain of prisms system, to STL and IGES files?

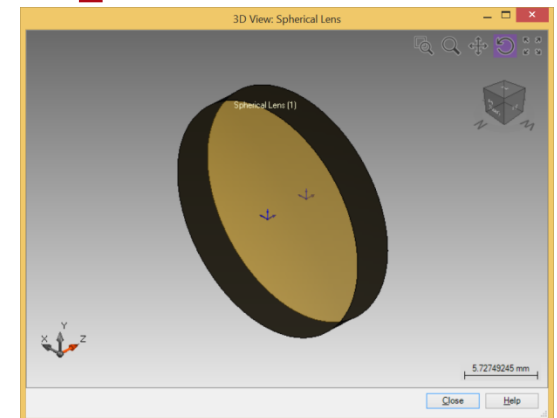
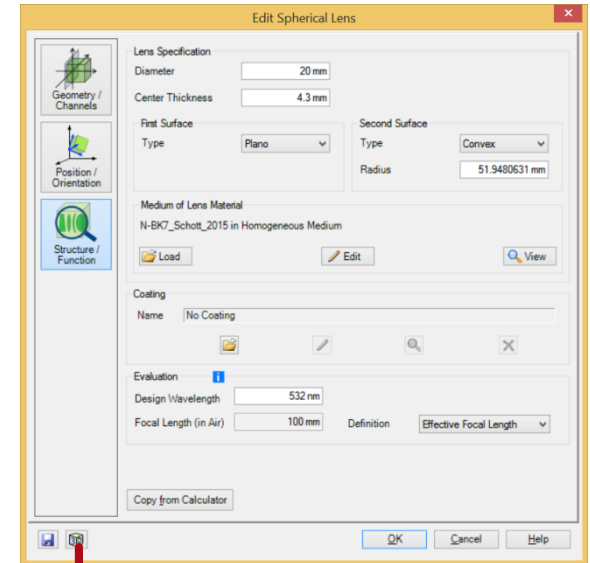


Overview

- STL format is widely used in 3D printing software.
- IGES format is widely used for the digital exchange of information in the field of Computer-Aided Design (CAD).
- VirtualLab supports the export of lens, prism, mirror system and components in STL format and in IGES format.

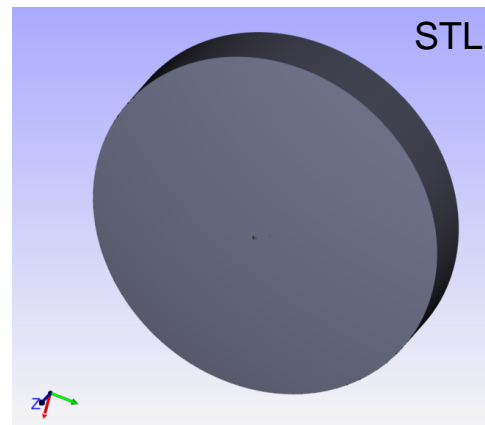
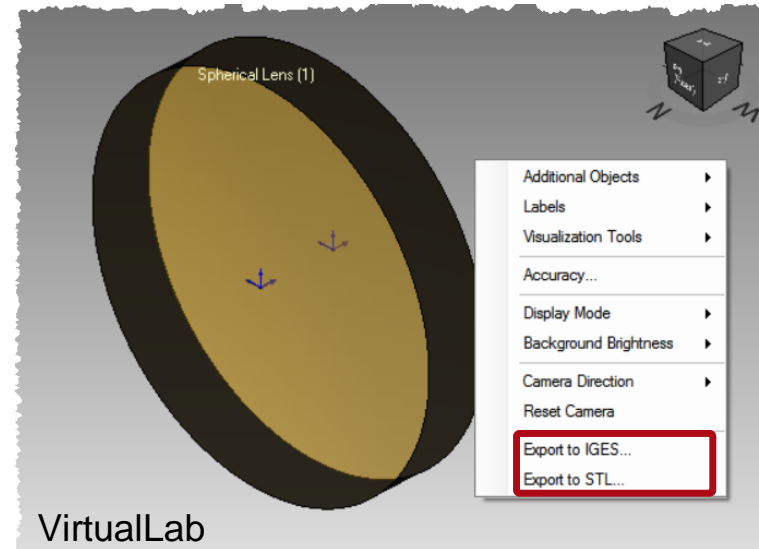
View of Component

- Each real component can be modified via the edit dialog of the component.
- For illustration purpose we use the default spherical lens as an example.
- Click *View* button to generate the *3D View*.



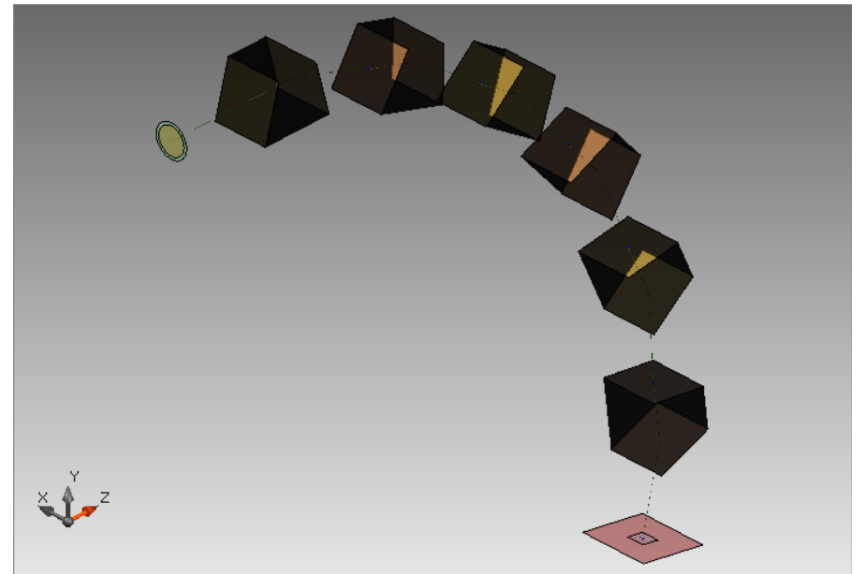
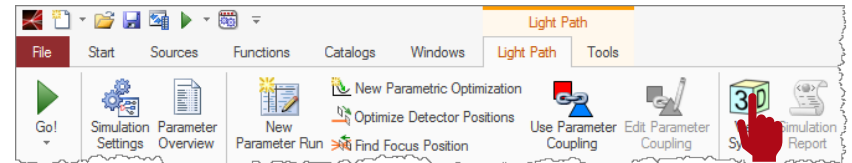
Export Component to STL/IGES File

- Right click on the 3D view window and select *Export to STL/IGES*.
- Then name your file and store it.
- It is now possible to open it in your STL/IGES viewer of choice.



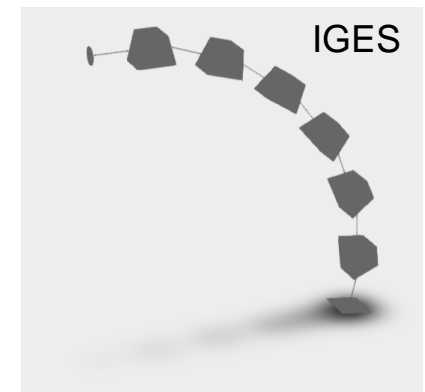
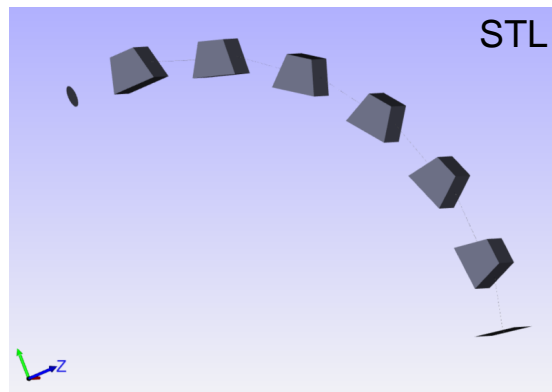
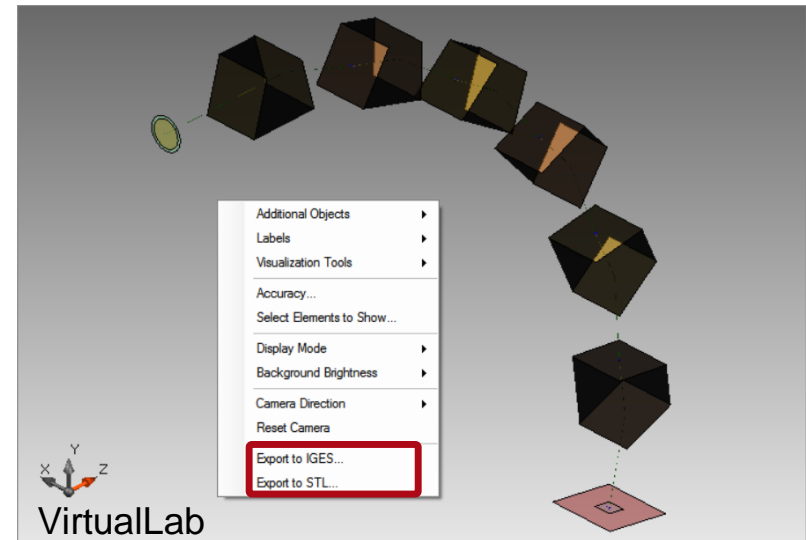
View of Optical System

- For a given optical system, in this example a chain of prisms, click *View System* to generate the *3D View*.



Export Optical System to STL/IGES File

- Right click on the 3D view window and select *Export to STL/IGES*.
- Then name your file and store it.
- It is now possible to open it in your STL/IGES viewer of choice.



Document & Technical Info

code	Feature.0005
version of document	1.0
title	Export Systems and Components into STL / IGES Format
category	Tools & Handling
author	Rui Shi (LightTrans)
used VL version	7.0.0.35
last modified on	September 7, 2017