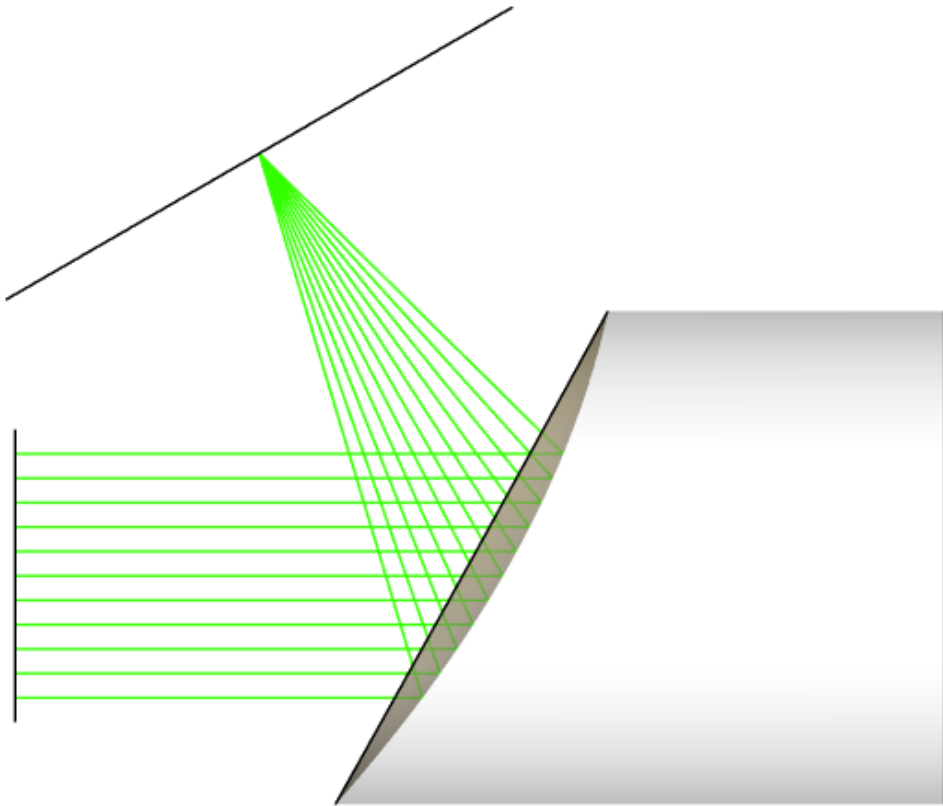


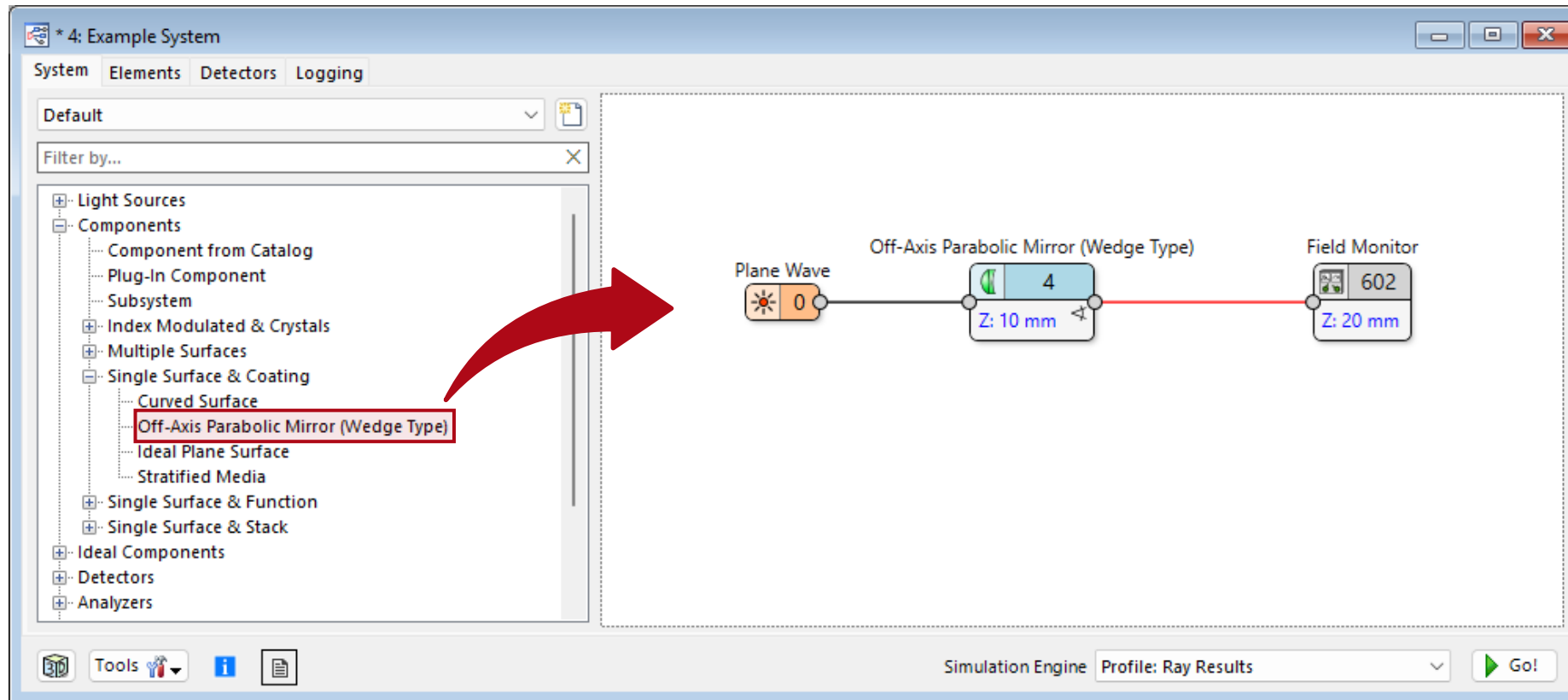
Off-Axis Parabolic Mirror

Abstract



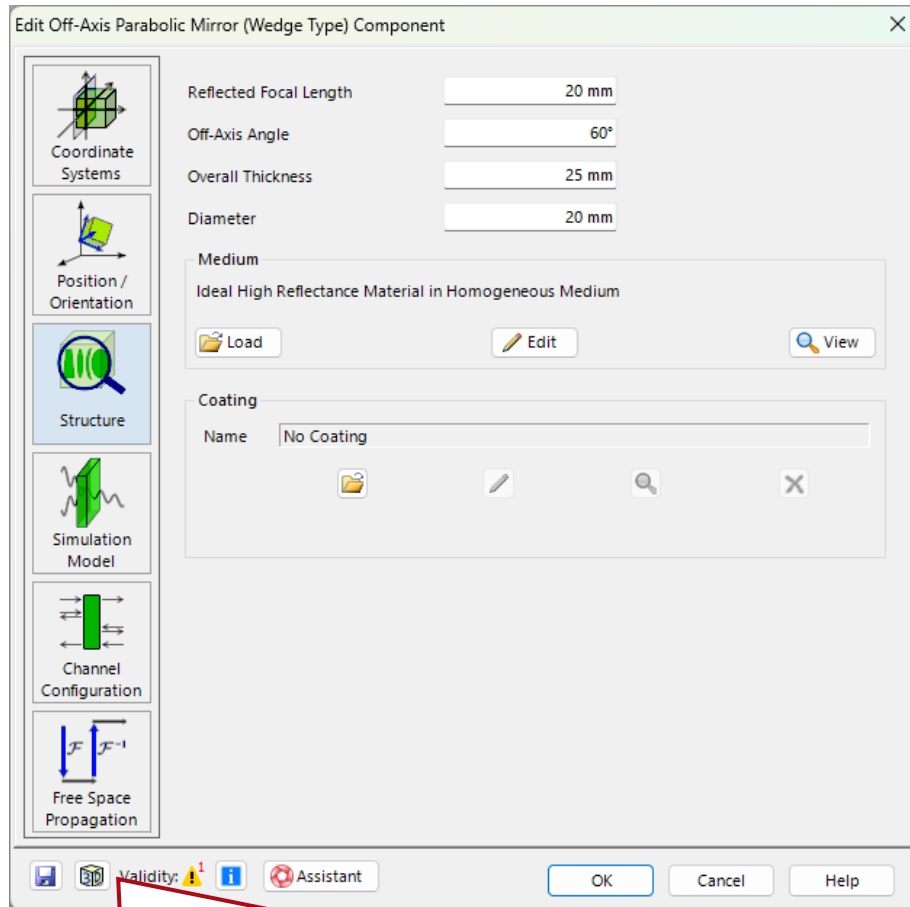
This tutorial demonstrates the Off-Axis Parabolic Mirror (Wedge Type) with examples of various focusing and collimation configurations.

Where to Find the Component?



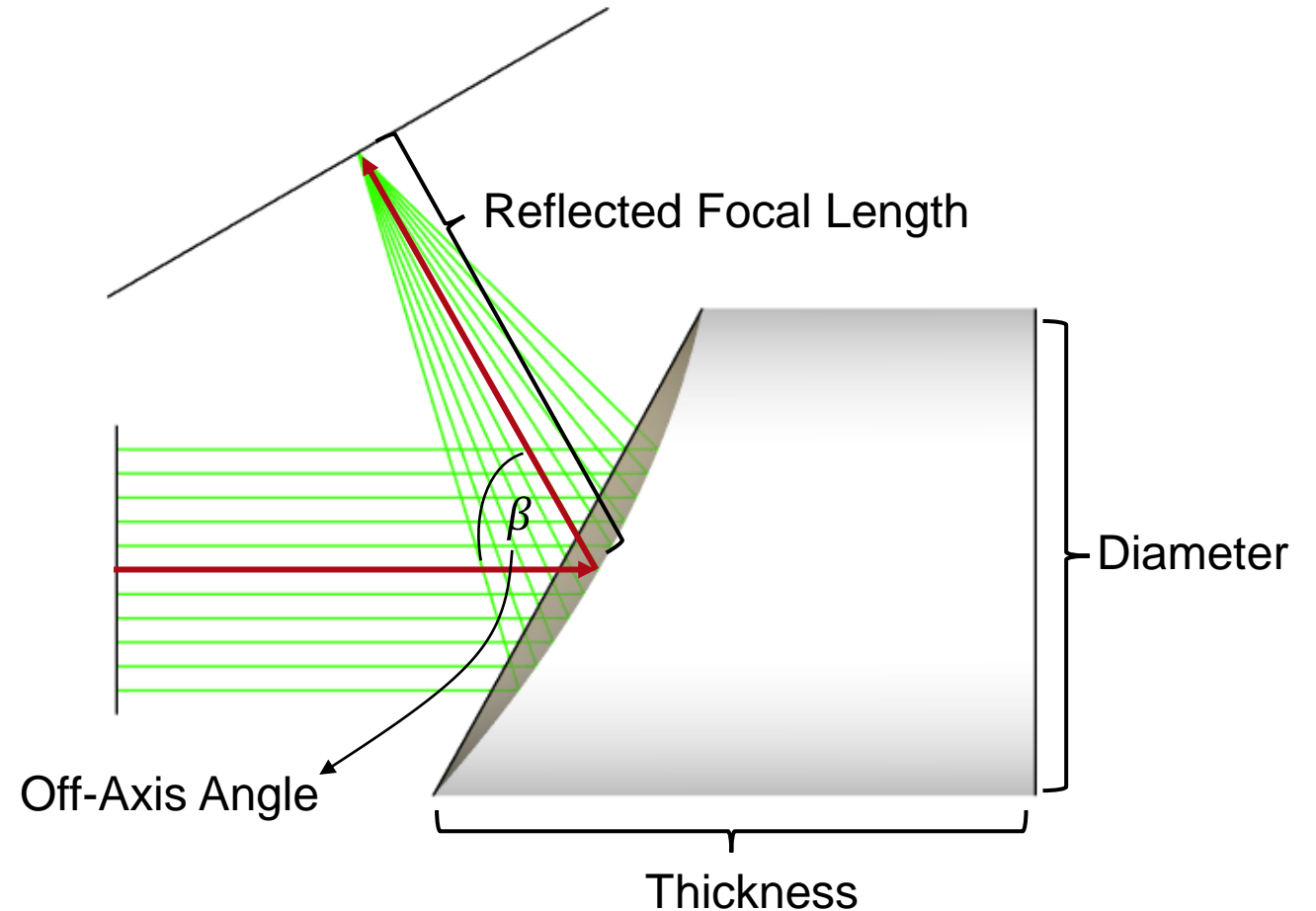
The Off-Axis Parabolic Mirror (Wedge Type) can be found under *Components/Single Surface & Coating*.

Parameters of the Component

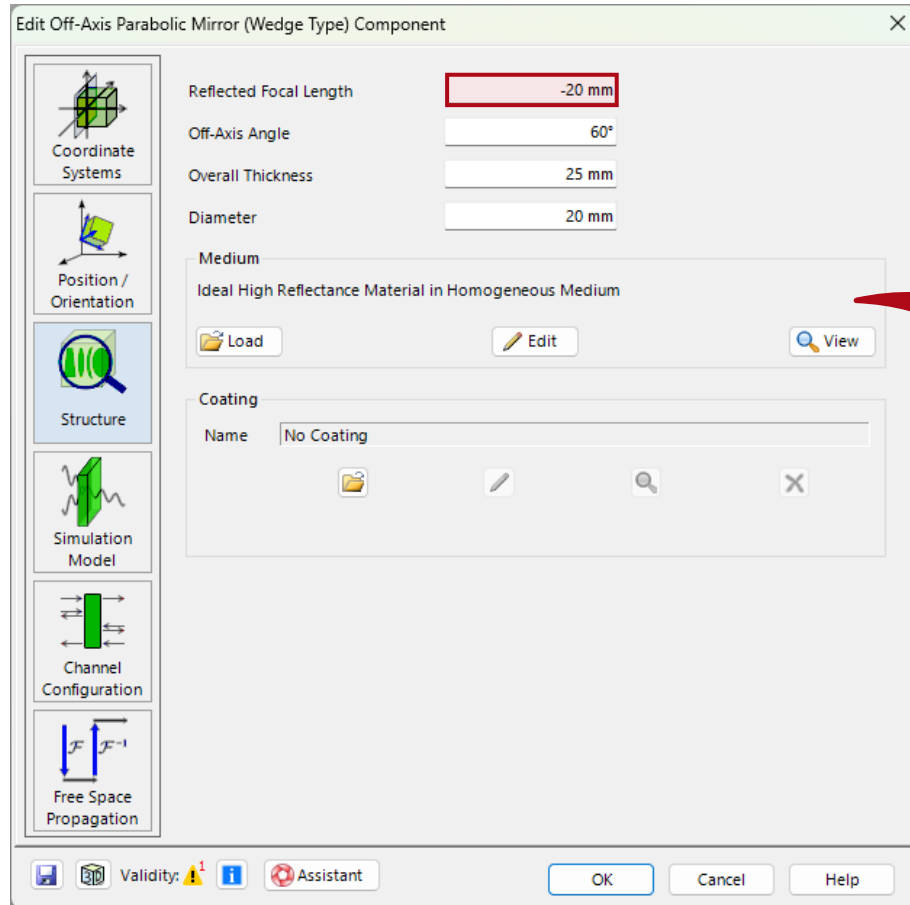


The actual structure can be visualized by pressing this button.

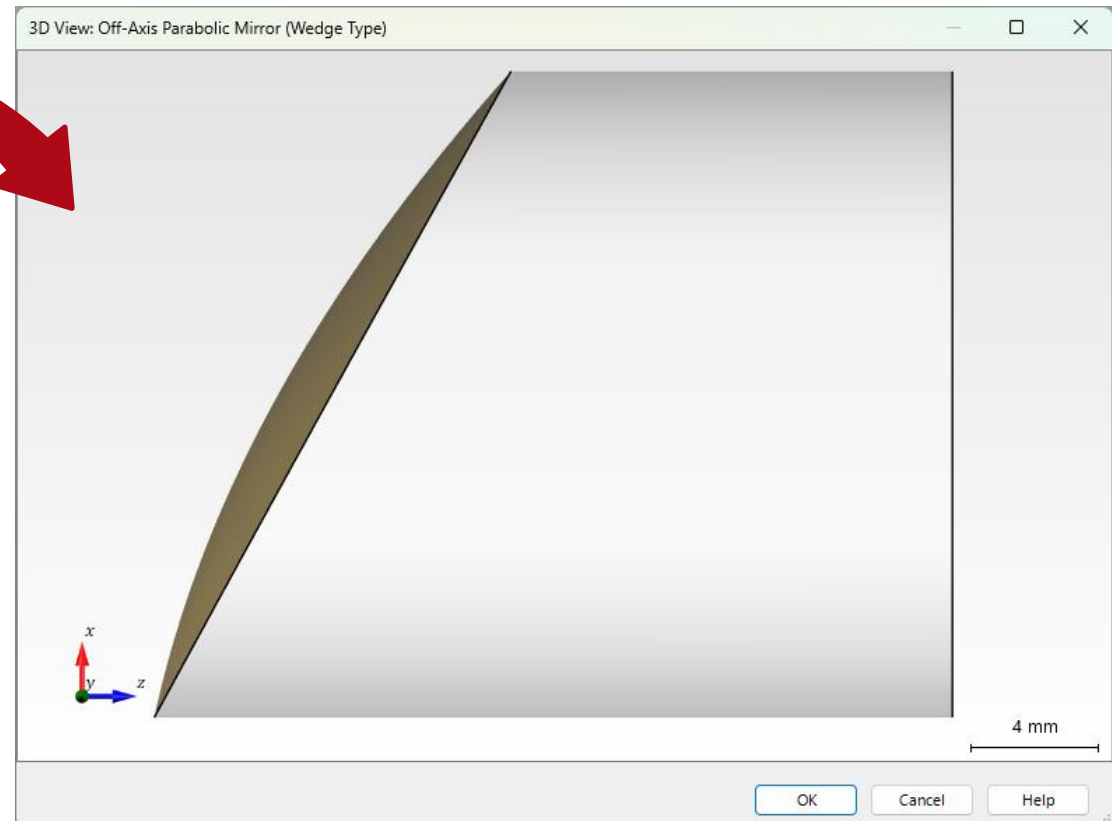
VirtualLab Fusion automatically generates the structure from the specified parameters.



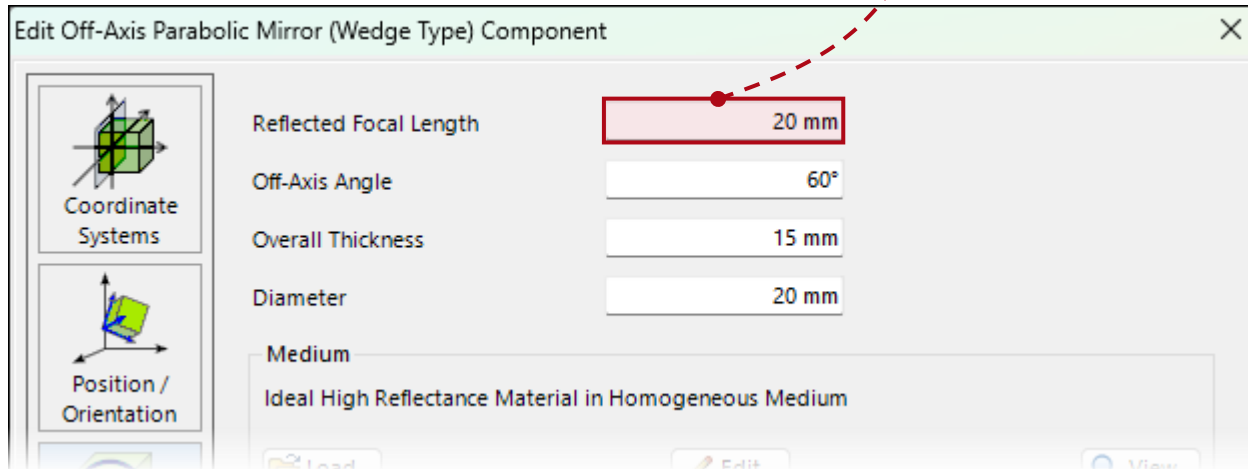
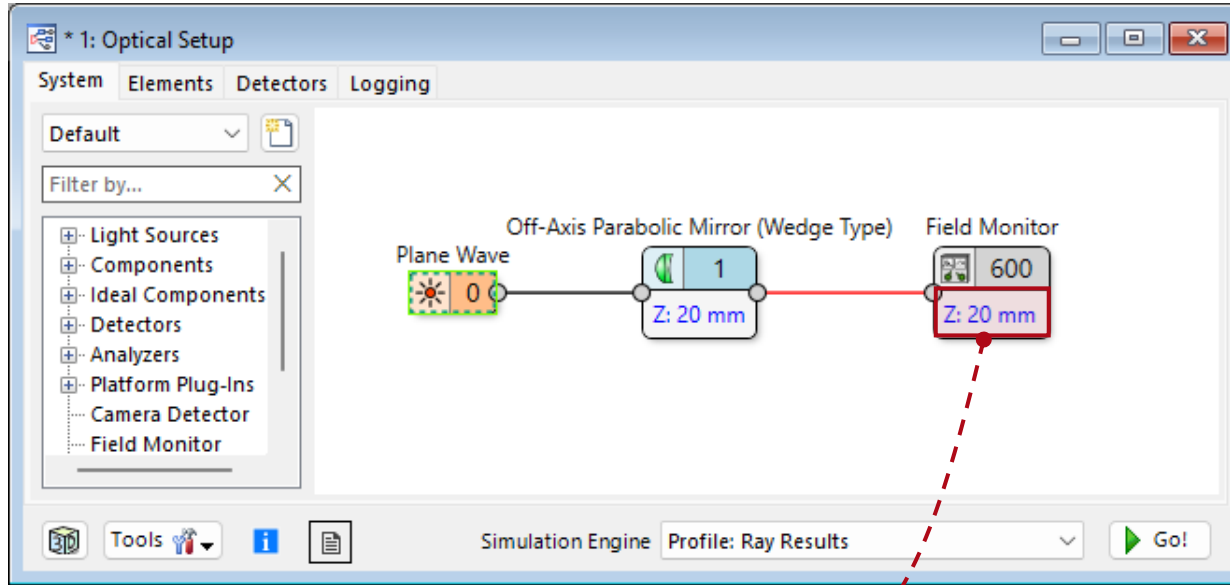
Off-Axis Parabolic with Negative Focal Length



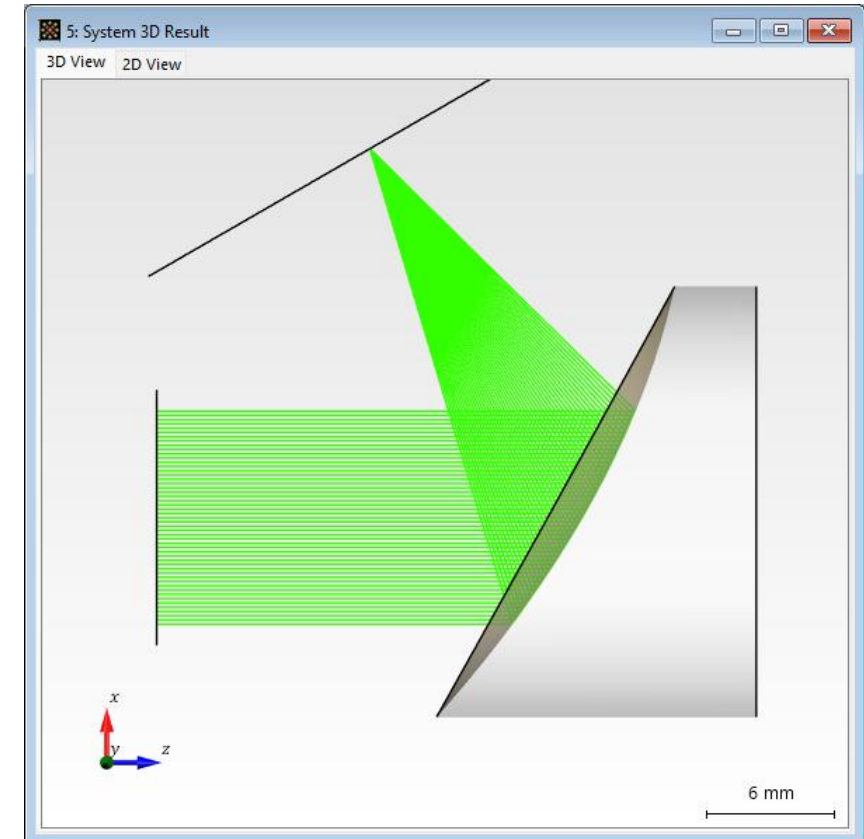
Setting a negative *Reflected Focal Length* automatically converts the structure into a diverging surface.



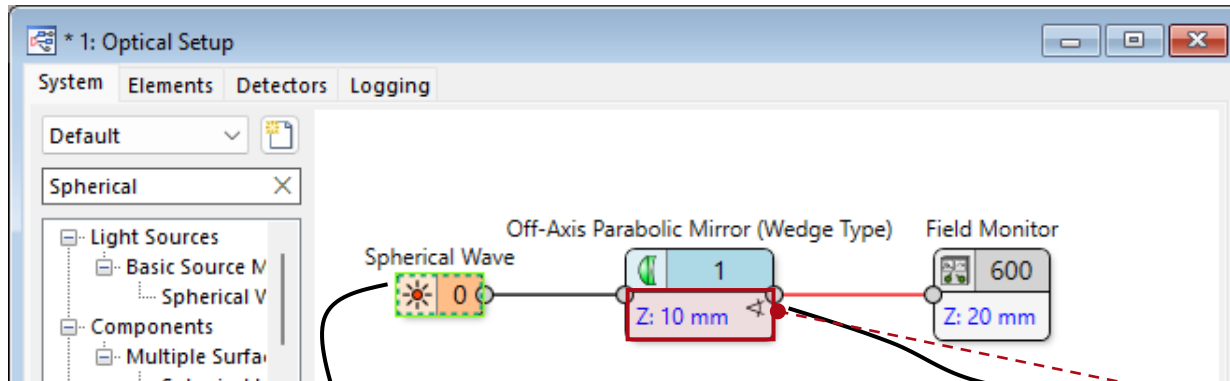
Focusing with a Off-Axis Parabolic Mirror



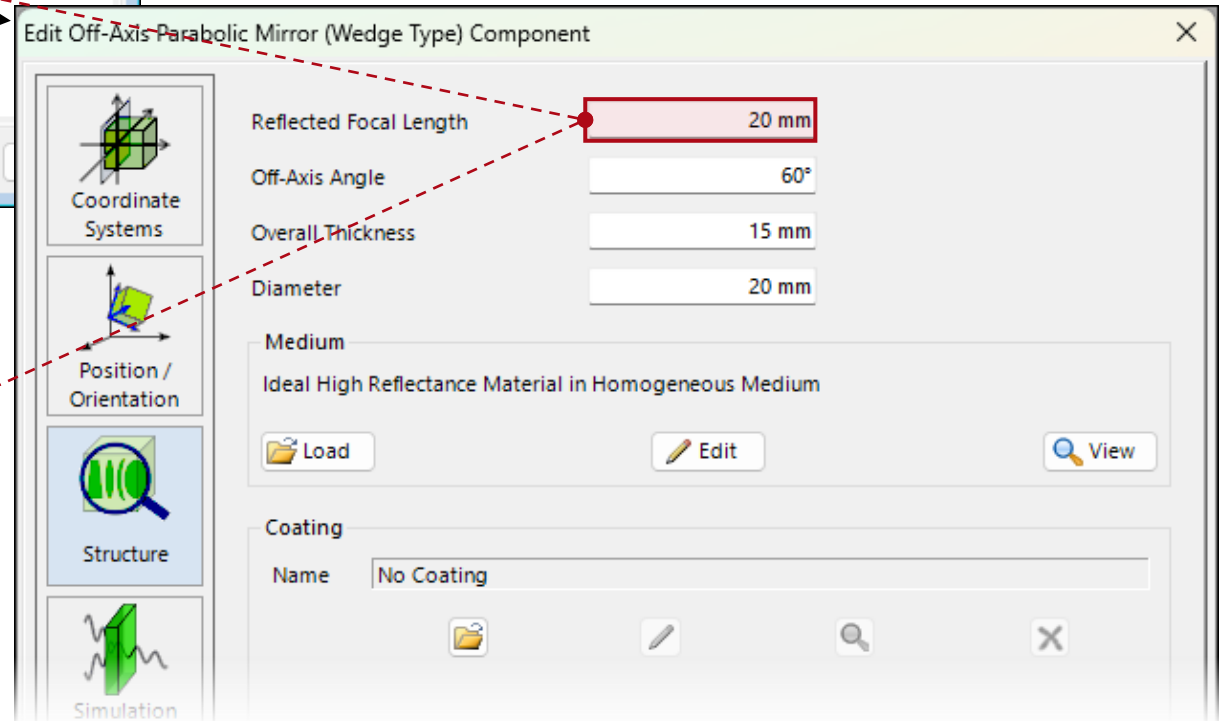
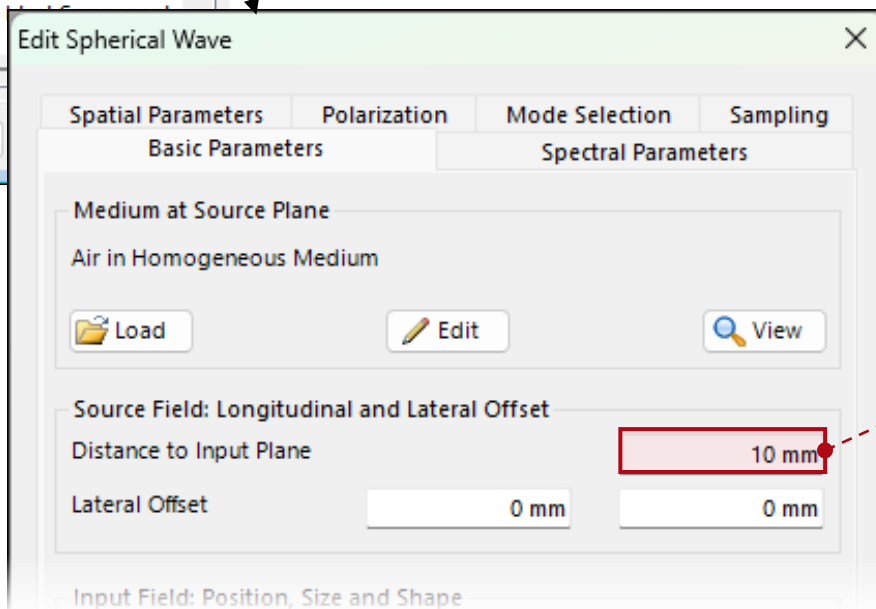
When focusing with the off-axis parabolic mirror, set the detector at the *Reflected Focal Length*. VirtualLab Fusion will automatically position it at the focal spot.



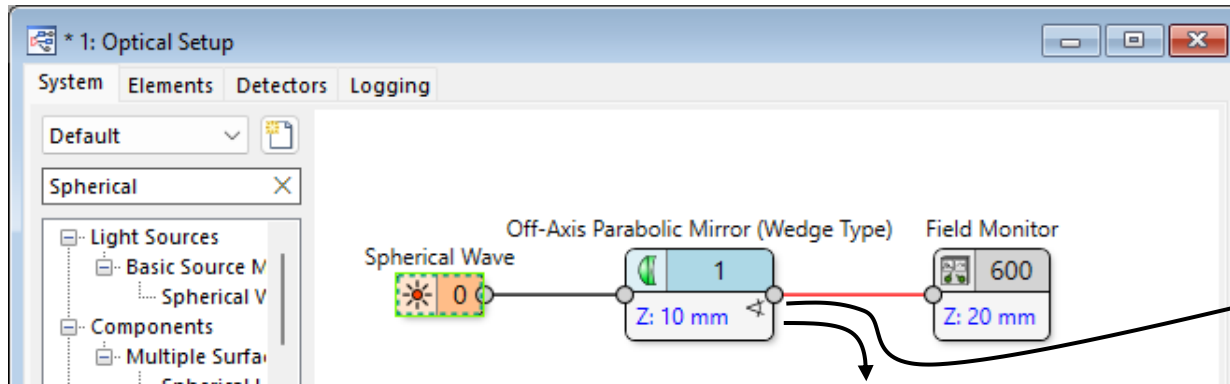
Collimation with a Off-Axis Parabolic Mirror



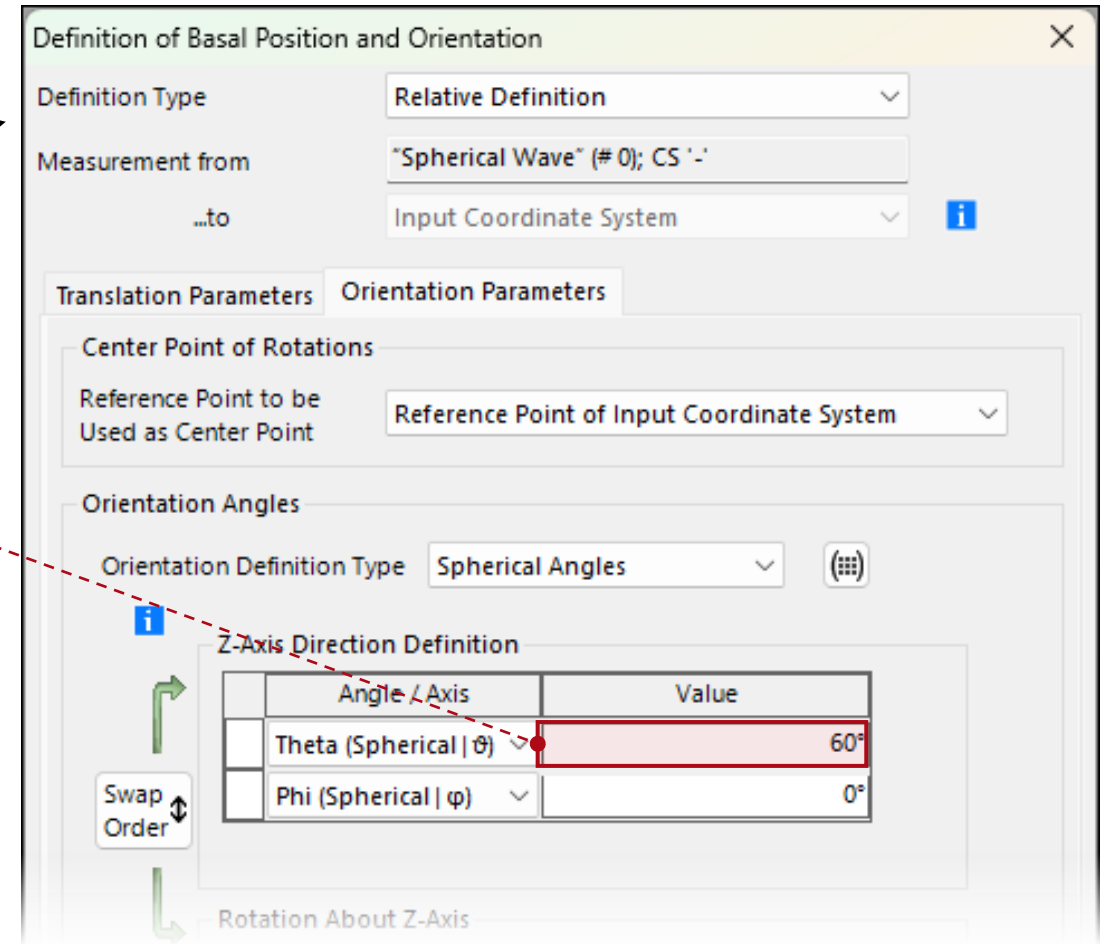
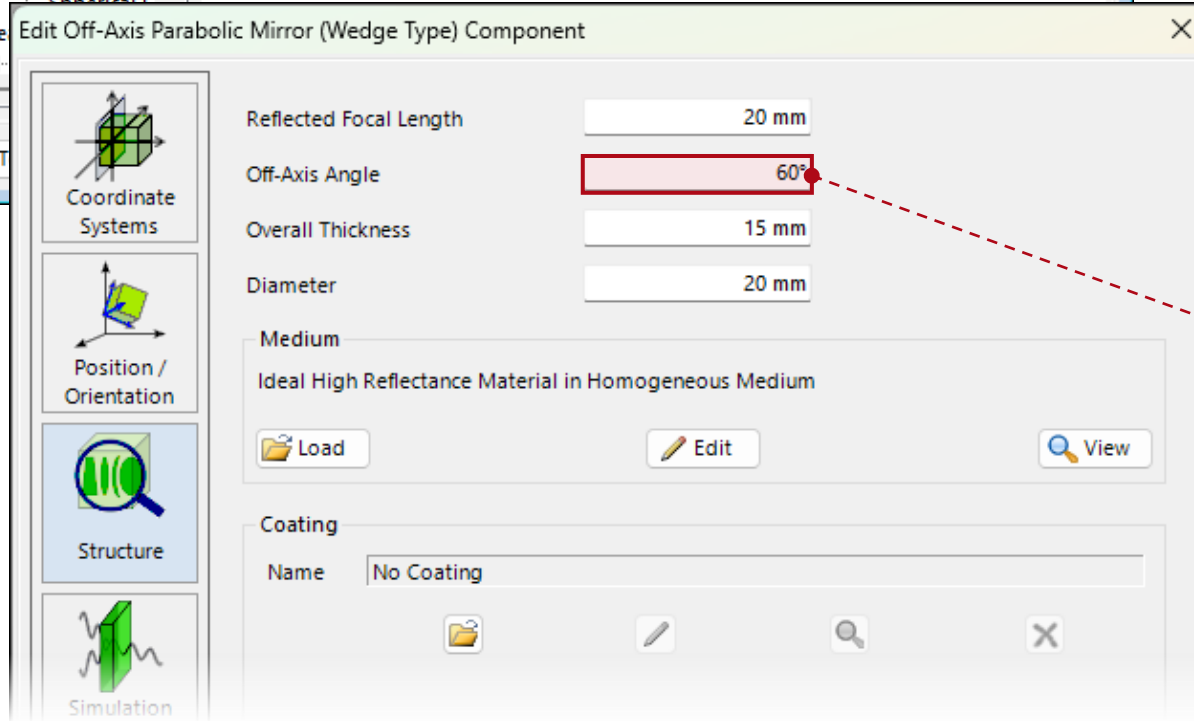
To collimate a spherical wave, set the *Reflected Focal Length* equal to the distance to the point source - i.e., the sum of the *Distance to Input Plane* and the distance from the off-axis parabolic mirror to the source.



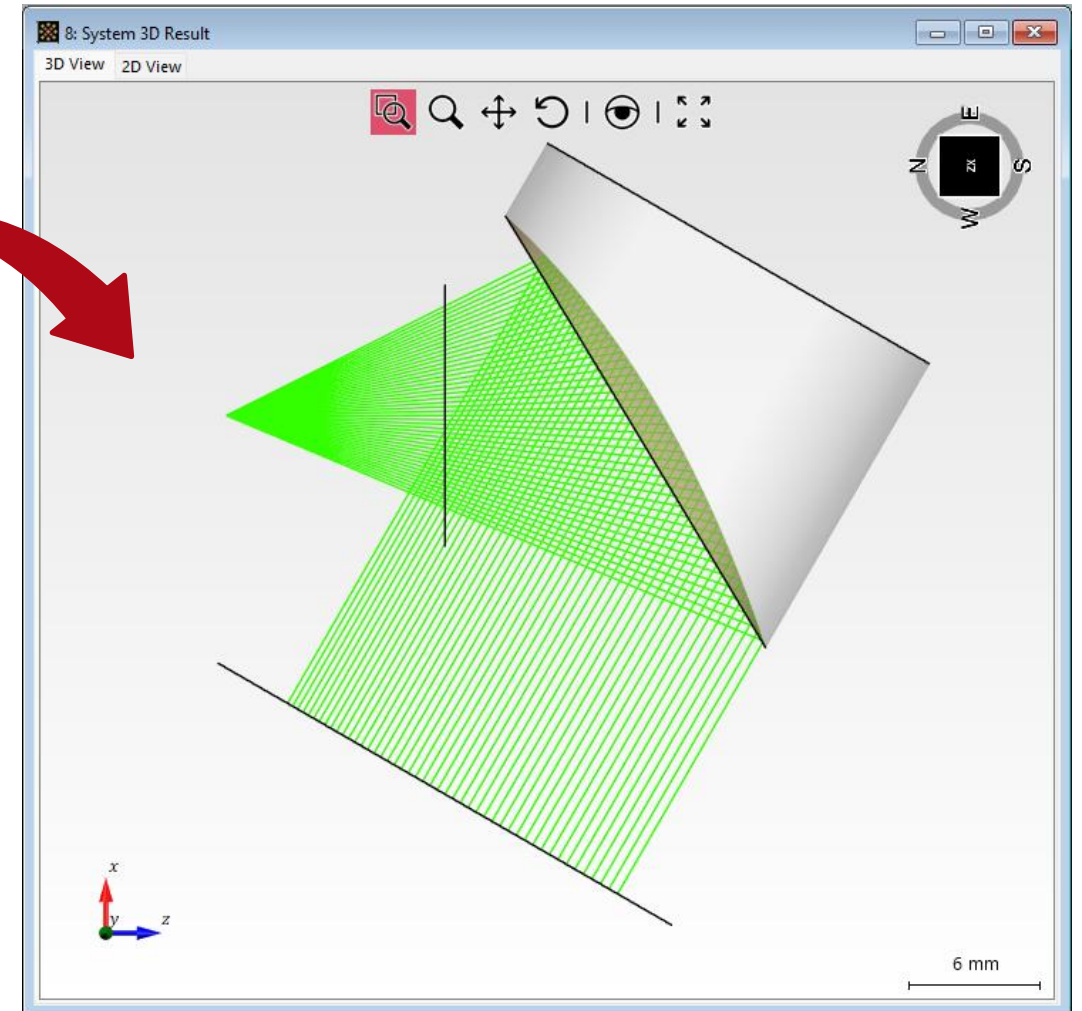
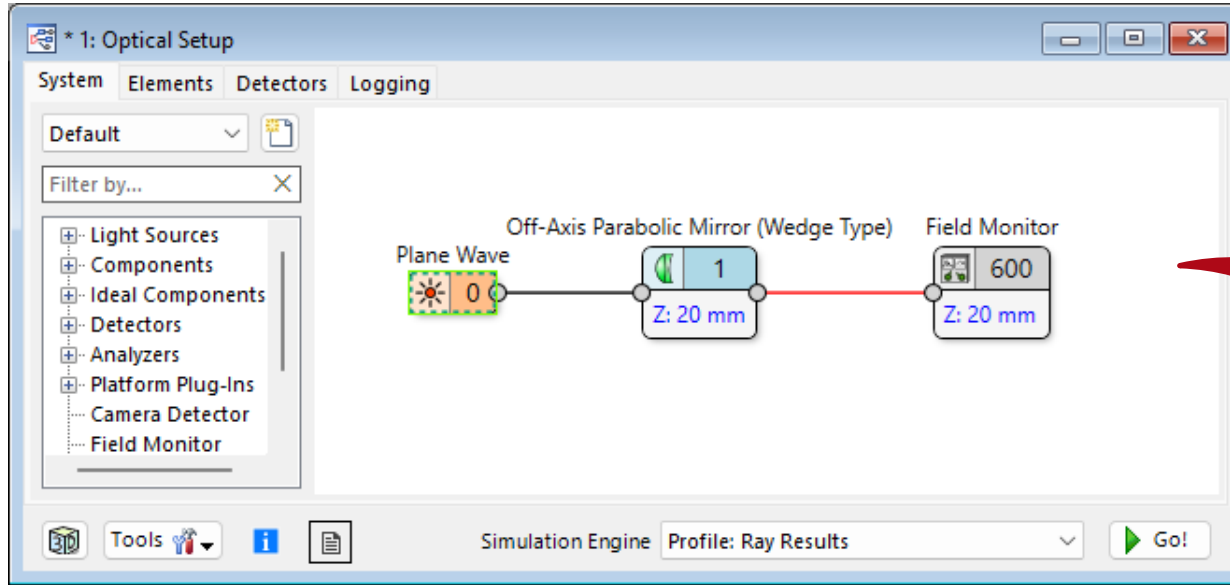
Matching Tilt Angles



Also tilt the Off-Axis Parabolic Mirror (Wedge Type) accordingly.

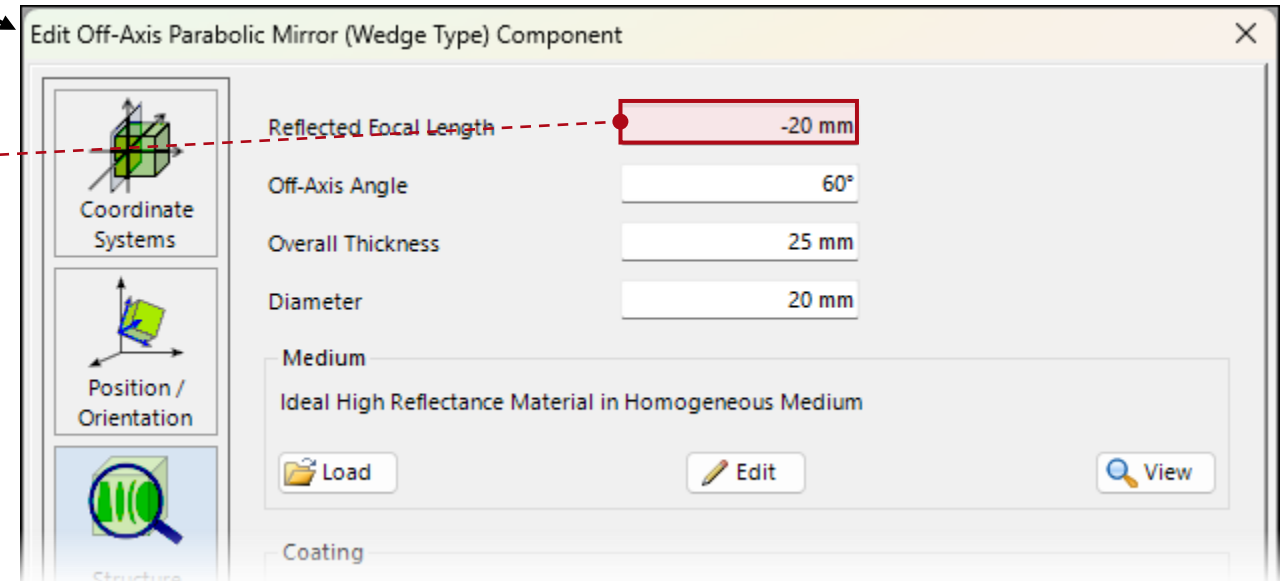
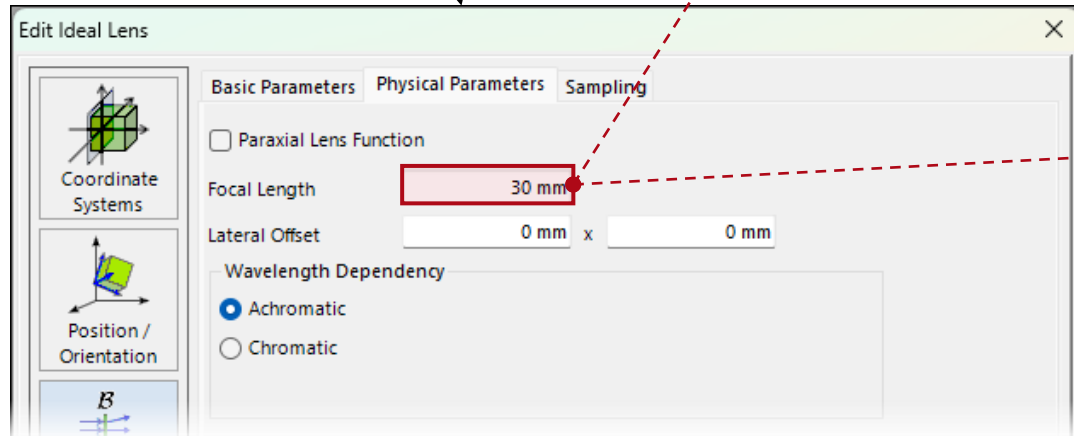
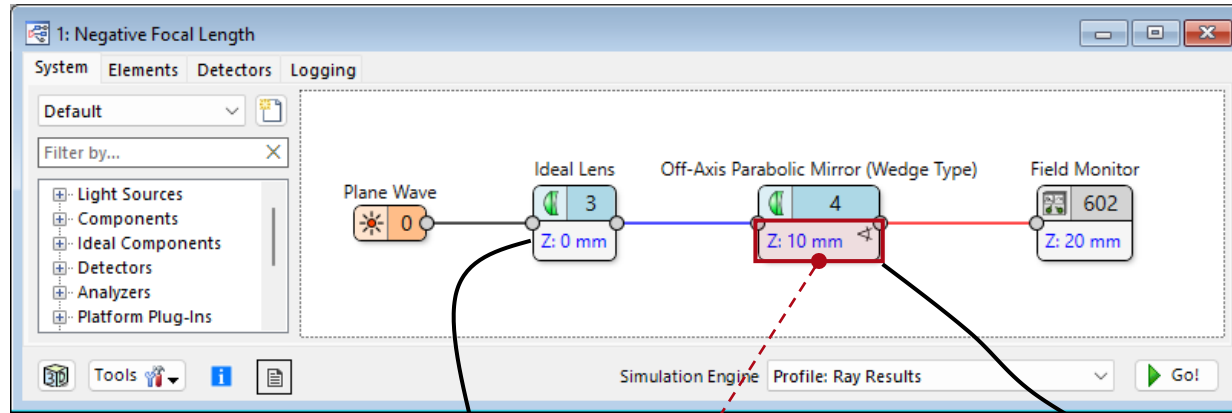


Collimation with a Off-Axis Parabolic Mirror

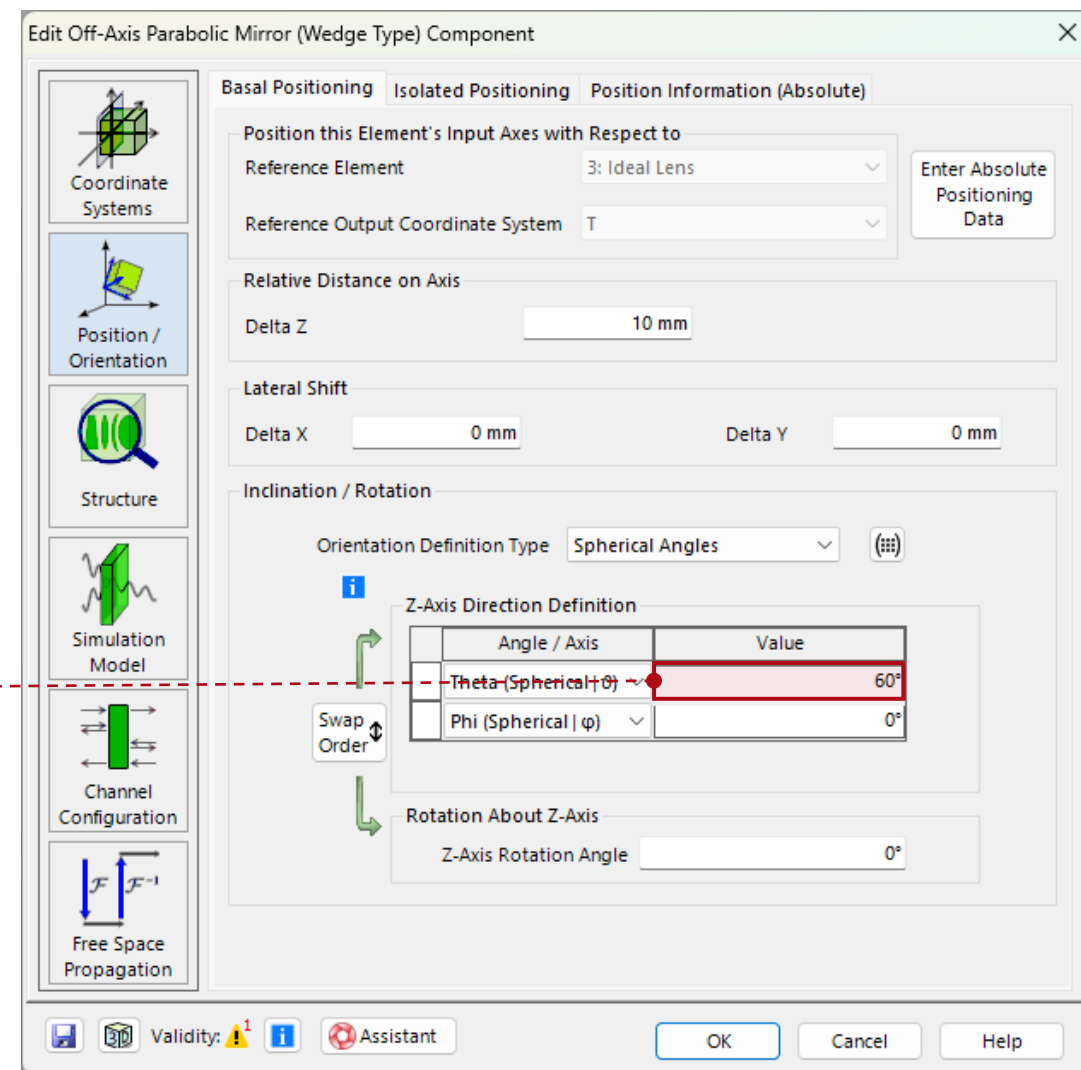
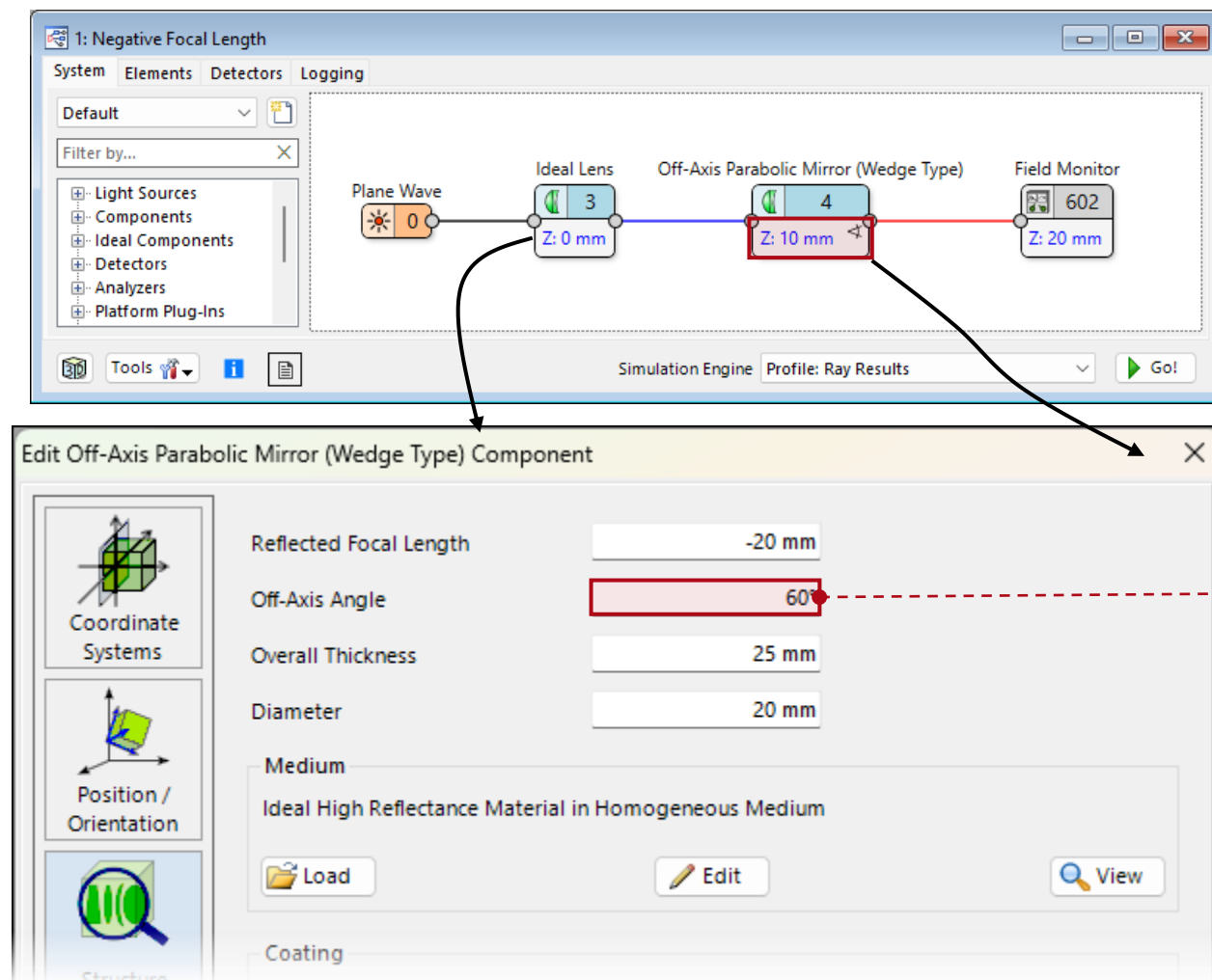


Collimation of a Convergent Beam with an OAP

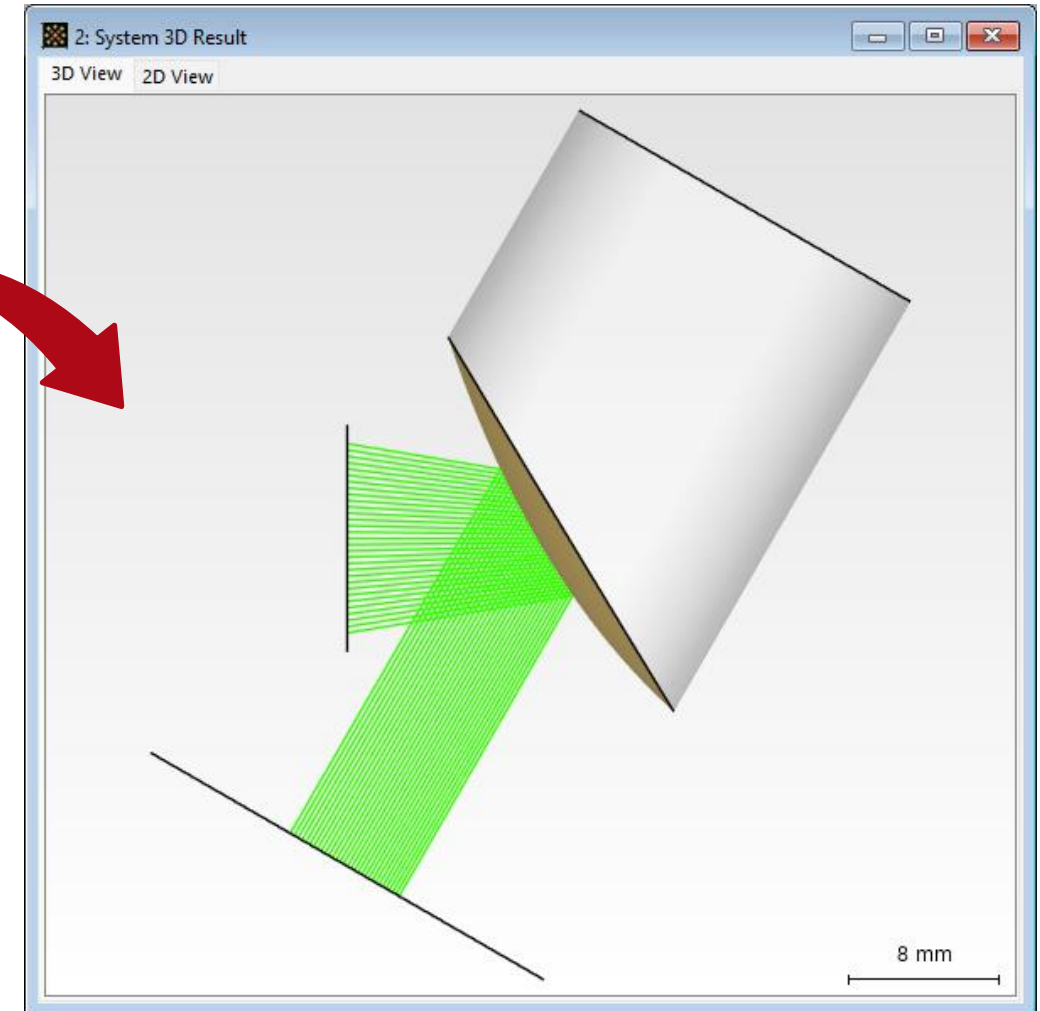
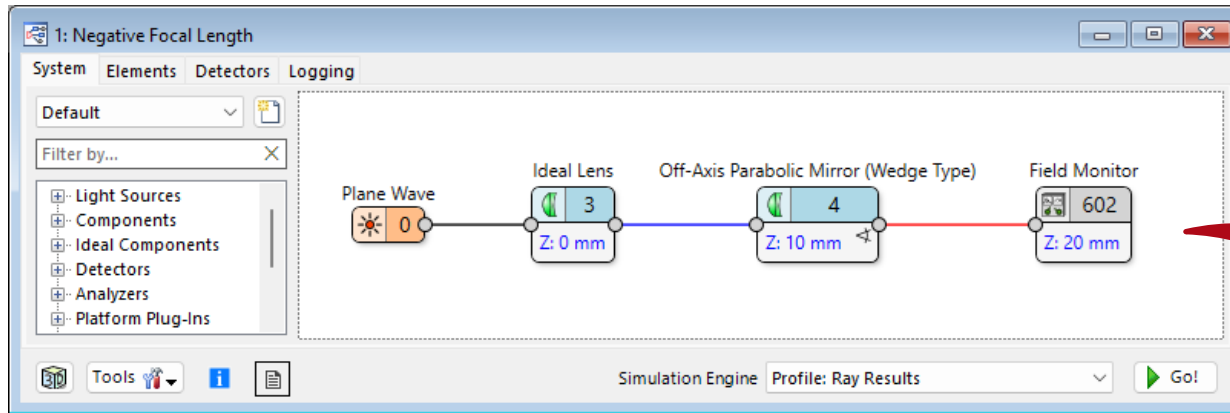
A convergent beam (e.g., from a focusing lens) can also be collimated if the OAP's focal point coincides with the beam's focal point.



Matching Tilt Angles



Collimation with a Off-Axis Parabolic Mirror



Document Information

Title	Off-Axis Parabolic Mirror
Document code	TUT.0485
Publication date	24.09.2025
Required packages	-
Software version	2025.2 (Build 1.118)*
Category	Use Case
Further reading	

** The files attached to this document require the specific version or later.*